

Council of Rockford Gardeners, Inc.

Organized 3/21/1980

E-Issue V2 Issue 4
Editor: Shirley Wiklund

CRG Clubs:

No. IL Daffodil Society
Plantaholics
Potpourri
Seedlings
Wildflowers

Council Motto:

"Enjoy nature's bounty and
beauty through work and
creativity."

Council Website:

<http://ilclubs.esiteasp.com/crg/home.nxg>

Upcoming Meetings:

Plantaholics

Went to Klehm &
Prairie Street Brewhouse

Potpourri

5/16/17

Volunteer @ Nicholas Cons.

5/23/17

Potluck & Plant Sale

Seedlings

5/8/17

Klehm Arboretum

Wildflowers

5/25/17

Pesche Greenhouse

Oak Fire Restaurant

North Woods Perennial Farms

ENJOY!



From the President's Pen

Co-Presidents: Ann Somers & Sarah Britton

Kudos to Sherry Seaver for another wonderful luncheon. Thank you to those who attended and purchased raffle tickets. There were some very nice raffle items provided by our clubs and by our members. We are thankful for their support. The monies raised from the luncheon will benefit our scholarship fund.

Jan Duncan and Lorraine White and their committee are hard at work on the Council of Rockford Gardeners FREE Garden Walk. Make sure you've marked June 21 as a "spend the day looking at some great gardens in Rockford." We should be proud that for more than 30 years we've showcased gardens in the Rockford area and inspired gardeners and non-gardeners to beautify their own properties and neighborhoods and therefore our city. Looking forward to a drying out period and then it can be full speed ahead in the garden! Wishing you all an abundant harvest!

Keep playing in the dirt,

Sarah & Ann



May
2017
In This Issue:

P1
Club Information
President's Pen

P2
Plant Sale
Information

P3
Plant A Row
Rockford Rocks!
Garden Gab
Get Involved

P4
Horticulture
Happenings

P5
CRG Annual
Garden Walk
Land of the Giants
Hosta Farm

P6
CRG Council
Reports

P7
CRG Council
Reports (Cont.)

SUBMIT questions or
comments to:
CRGnews4u@gmail.com

REMEMBER to keep your
e-mail address current
with your individual club
and the Council.



Plant Sale Season Begins...

Garden Sale 2017

Alchimella Mollis (Lady's Mantle)
Alliums var.

senescens glaucum (corkscrew onions)
Ajuga - Chocolate Chip
Astilbe - Violet

Brunnera - Jack Frost & Macrophyllia
Cranesbill Geraniums

Day Lilies

Epimedium Rubrum

European Ginger

Canadian Ginger (wild)

Ornamental Grass

Ostrich Ferns

Hostas

*Touch of Class, Stilletto, Appletini,
Plantaginea, Hapsden Blue,
Golden Tiara, Fire Island,
Hacksaw, Allen P. McConnell,
Elegans, Lemontini, Big Mama*

Hydrangia Annabella (mop head)

Border Iris

Siberian Iris

Lysimanchia "Aurea" (creeping Jenny)

Monarda

Perennials PLUS
great selection
some unusual varieties

**5917 Shelford Lane
Rockford, IL**

Directions:
from Mulford & Spring Creek Rd,
go South on Mulford for 1/4 mile,
turn Right at Gale Lane
turn Left at Shelford Lane
4th house on the left

**Thursday & Friday
May 25 & 26**

Thursday: 7^{AM} to 6^{PM}

Friday: 7^{AM} to 5^{PM}

Double Dwarf Fernleaf Peony
Poppies - Oriental Orange

Salvia - Sensation Rose,
Marcus

Russian Sage

Sedum - Neon,
Autumn Joy

Painter's Pallate

Dwarf Solomon's Seal

Variegated Solomon's Seal

Sweet Woodruff

Houseplants & Annuals:

Salvia artemis

Angel Wing Begonias

from two gardens:

Ginny & Wayne Hatwich

Magi Nafranowicz

PERENNIAL PLANT SALE

The Rebman's and the Duncan's present our annual plant sale

Over 50 varieties of perennials

For shade and sun including native wildflowers

Friday, May 19th 8:00 am - 5:00 pm

Saturday, May 20th 8:00 am - noon

235 and 303 Palm Ave, Rockford, IL



PLANT SALE

By Women's Garden Club
of Boone County

Friday, May 20...9AM-5PM

Boone County Historical Museum

311 Whitney, Belvidere

Perennials...house plants...annuals
vegetables and herbs

Proceeds to fund scholarships for high school seniors.

University of Illinois Extension

Plant-a-Row 2017

Share your Harvest with the Hungry



Year Round Drop-off Sites in Rockford

University of Illinois Extension
1040 North Second Street
Monday-Friday, 9am to Noon

Rock River Valley Pantry
421 South Rockton Street
Monday-Friday, 8:30am to 3pm

Winnebago-Boone Farm Bureau
1925 South Meridian Road
Monday-Friday, 8:30am to 4pm

Seasonal Drop-off Sites

mid-July — September

NE Corner of Durand Town Square
(adjacent to the Heart and Garden coffee shop)
Mondays, 11am to Noon

Cherry Valley Public Library
755 East State Street, Cherry Valley
Tuesdays, 3:30 pm to 5:30pm

O&E Saint Anthony
566 East State Street, Rockford
(State & Rockbury Center)
Tuesdays, 5pm to 7pm

Edgemoor Farmers Market
(Edgemoor Shopping Center, corner of North Alpine and Highway Roads, Rockford)
Wednesdays, 11am to Noon

The Landscape Connection
4472 South Mallard Road, Rockford
Monday-Saturday, 9am to 6pm
Sunday, 11am to 3pm

What is Plant-a-Row for the Hungry?

University of Illinois Extension-Winnebago County Master Gardeners work to raise awareness about the issues surrounding hunger in our community.

Plant-a-Row for the Hungry provides a much needed outlet for vegetable gardeners to donate their over-abundance of produce, which helps to meet the increasing demands on local food pantries.

U of I Extension inspires gardeners to "plant an extra row" of veggies in their gardens with the intent of donating that extra produce to help end hunger.



UNIVERSITY OF ILLINOIS EXTENSION
Extending Knowledge Changing Lives

University of Illinois—U.S. Department of Agriculture—Local Extension Councils Cooperating
University of Illinois Extension provides equal opportunities in programs and employment.

QUESTIONS? Contact
University of Illinois Extension-Winnebago County
1040 North Second Street, Rockford, Illinois 61107
(815) 986-4357

(visit our office on the Rock River—access via Ethel Avenue stoplight—south of the Nicholas Conservatory)

<http://web.extension.illinois.edu/jsw>



Spring Fritillaria

Submitted by Kathy Batzkall

Rockford Rocks!

Submit a photo of one of your favorite places to visit in the Rockford area, or a "nature" photo you have taken in the Rockford area.

Complete the Photo Submission Form at:

[PHOTO SUBMISSION FORM](#)

After submitting the form, e-mail the photo to CRGnews4u@gmail.com

Garden Gab:



Welcome to Garden Gab!

Do you have a question, comment, concern or gardening issue that you would like to share with the members of CRG?

Complete the form

[BY CLICKING HERE](#)



Donations of wildflowers (especially Bluebells) are being requested for planting at the VI Bates Wildflower Garden at Klehm. If you have wildflowers you can donate, please contact Seedings member, Anita Johnson.

+++++

Marshall Elementary is looking for help with their planting beds.

Marshall Elementary is one of the Rockford Public Schools and houses the gifted program, grades 1 – 4.

Last summer the program was moved into their new location at 4704 North Rockton.

(Just down the road from Wesley Willows!)

They are beginning to beautify the landscape and planting areas at the building.

If you would be interested in helping – especially volunteering to water plants during the summer when school is not in session, please contact Shirley Wiklund at CRGnews4u@gmail.com

Horticulture Happenings



What's the Buzz All About?? Attracting Beneficial Bees Gina Ross, University of Illinois Extension Master Gardener, Winnebago County

Apples, mangos, plums, peaches, avocados, onions, strawberries, cashews, pears, cherries and cotton. What do these plants have in common? These are some of the many, many plants pollinated by bees. Honeybees pollinate up to 80% of our food crops. Plants cultivated for livestock feed and for fiber such as cotton are dependent on these pollinators as well.

In the last ten years, over 40% of the bee colonies in the US have suffered Colony Collapse Disorder (CCD) due to the increased use of pesticides. Habitat loss and a reduction in plant diversity are additional factors affecting the availability of nutrients from sources of nectar and pollen.

Gardeners can lend a helping hand by:

- **Creating diverse plantings.** Choose plants of varying heights and include flowering shrubs & trees. Have something in bloom from early spring to late fall.
- **Plant flowers bees love such as:** alyssum, geranium (cranesbill), bee balm, echinacea, asclepias, aster and clover.
- **Plant wildflowers and native species:** native wildflowers will provide bees with a reliable source of both pollen and nectar.
- **Plant single flowers:** Single flowers, those with a ring of petals will provide more pollen and nectar than double flowers. Double flowers make it more difficult for bees to reach the inner flower parts.
- **Colors –** Bees are most attracted to yellow, blue & purple. Blossoms that are shallow or flat such as zinnias, asters and daisies will attract the largest variety of bees. Plants in the mint family such as salvia, oregano and nepeta attract long-tongued bees. Long tongue bumblebees will go for columbine, bee balm and snapdragons.
- **Create a “Bee Bath”** Fill a shallow container with fresh water and add twigs or pebbles for the bees to land on so they can take a drink.
- **Use natural pesticides and fertilizers.** Insects like spiders & ladybugs will naturally keep the pest populations at bay. If you don't have a garden you can always plant a container to attract bees!

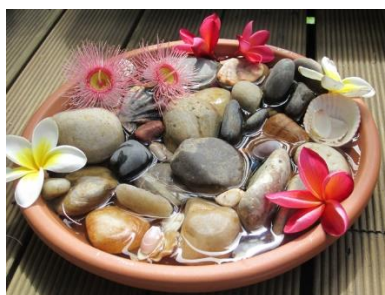
The video below shows you can have a beehive in a small space.

<https://www.youtube.com/watch?v=drJYlql8Jyk>

More about Colony Collapse Disorder

<https://www.youtube.com/watch?v=Zgc5w-xyQa0>

When purchasing plants for your garden ask for plants that haven't been treated with pesticides.



DIY Bee Bath



The hum of bees is the voice of the garden. Elizabeth Lawrence

JUNE 21, 2017

CRG Annual

Free Garden Walk

Noon – 8 PM

More information @

[THIS LINK](#)



Spring has arrived at LAND OF THE GIANTS HOSTA FARM!

Spring is such a wonderful time of the year; the spring bulbs are blooming, the trees are leafing out, the birds are chirping, the days are getting longer and the sun is getting warmer.... but most importantly, the hostas are waking up and emerging from their long winter's nap. As gardeners you all know that this can be a very busy time of year. Here at the Land of the Giants Hosta Farm we are cleaning off beds, fixing broken tags, potting up new additions to the sales yard as well adding new treasures to the display beds, fertilizing, applying slug control... well, let's just say we are hard at work getting ready to open up the gardens for you to come and visit! Our season begins with our Open House Days and we are really looking forward to seeing you here!

Hosta 'Giantland Mother's Day'

Giantland Mother's Day – Giantland introduction

"In honor of all the beautiful, loving mothers out there".... Jeff is introducing 'Giantland Mother's Day'.

This medium/large hosta makes a 3 foot wide clump of wavy leaves; soft green with a light yellow border; 8" x 5". Great grower. Jeff says it is "absolutely beautiful, very calming....

like most mothers I know" Available for the first time this year!!

For additional information, photos, open house dates & much more,

Visit their website at:

www.landofthegiantshostafarm.com

LAND OF THE GIANTS HOSTA FARM

9106 North Raven Court

Milton, WI 53563

REPORTS FROM MAY 1, 2017 COUNCIL MEETING

TREASURER'S REPORT

Balance as of April 1, 2017.....	\$5,189.98
Receipts.....	<u>2,816.00</u>
Balance.....	\$8,005.98
Total disbursements.....	<u>1,352.13</u>
Ending balance as of April 30, 2017.....	\$6,653.85

Submitted by **Becki Dennis**, Treasurer

COMMITTEE REPORTS

Programs – **Ann Somers** reported that Sherry Seaver is looking for a new place for our next luncheon. She is looking at Mauh-Nah-Tee-See Country Club and other locations.

Publicity – **Arch Smith** reported that he sent out 40–50 emails and press releases to his various lists and will send out more soon.

Also, Jan Duncan reported that she received a call from Maggie Hradecky from the RR Star, and Maggie will put something about the garden walk in the 815 Magazine. It comes out in mid-June. Maggie will also interview a couple of garden walk owners for her article about area gardens.

Awards – **Mary Pinter** reported that the V.I.P. award was presented to Jan Duncan at the Spring Luncheon.

Civic and Conservation – **Sarah Britton** had no report.

Garden Walk – **Lorraine White** reported the committee has had its ups and downs. They lost 1 garden last week but quickly gained a replacement, so that they still have 7 gardens. The brochure was ready to go to the printer but is in the process of being changed to delete 1 garden and add another and to change the map. We have the bookmarks here today and need members to help deliver them to the greenhouses soon. The Representatives are securing greeters for their gardens.

Lorraine asked Council members when they thought the brochures should go to the greenhouses – late May or early June. It was decided that the brochures will be handed out to Council members at the June 5th Council meeting for delivery after that meeting.

Horticulture – **Ann Somers** said that Gina is always looking for topics for her articles. If you have any ideas, send any suggestions to Gina. EJ Rebman said that she will email Gina about the jumping worms and mulch volcano-ing around trees.

Hospitality – **Alice Moczynski** reported that she was listening to Council members' comments about our experience at Mary's Café today, and we will be coming back here next month, June 5th, at 9:00 A.M.

Membership Book – **Kathy Batzkall** again reminded us to please use the coupons in the booklet to The Landscape Connection and Hidden Timber Gardens.

REPORTS FROM MAY 1, 2017 COUNCIL MEETING- CONTINUED

Newsletter – **Ann Somers** reported that we should get any information to Shirley Wiklund this week. The newsletter will come out later this week. **THANKS, SHIRLEY FOR DOING SUCH A GOOD JOB!**

Parliamentarian – **Mary Pinter** reported that Ann is doing well.

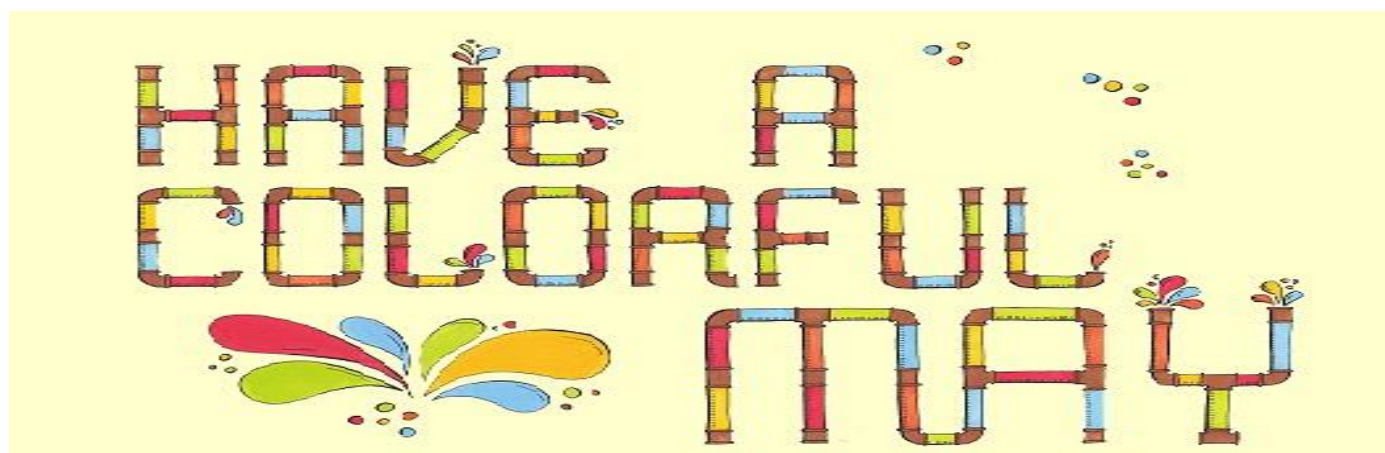
Sunshine - **Peg Goral** had no report.

Ways & Means – **Karin Emery** reported that all the raffle prizes were excellent. She reported that the bags for the gift certificates had the least amount of tickets in them. Maybe we need something to bring the certificate to our attention. She was also wondering about the age of our participants – if that makes a difference in what bag they put their tickets in. Karin said that the bag for the petunia hanging basket had the most tickets. The little house that EJ Rebman's husband made was a great raffle prize. In total there were 15 raffle prizes, and we made \$450. Each item (except the house) was valued at around \$30. Items were donated by the garden clubs, but anybody can donate a prize for the raffle.

Karin said that the stool/table had 54 tickets in the bag. The hanging basket bag contained 45 tickets. There were 34 in the bag for the shovel. Others had 28 and downwards to 12.

The 50/50 raffle made \$86, and the 15 raffle prizes made \$450, for a total of \$536.

Website – **Kathy Batzkall** reported that she is “almost there” regarding the website. She found out that we will be dealing with a 3rd person for “coding”. She is asking the webmaster to help, and he has to give it to the coder. Kathy said that it is a learning experience. She said that “we are close to the end”.



**Which Garden Club will have a member submit a photo
to be included in the next CRG E-News?**

Plantaholics?? Potpourri?? Seedlings?? Wildflowers??

Also – be sure to submit your questions for ‘Garden Gab’!